



## ISC1 I22

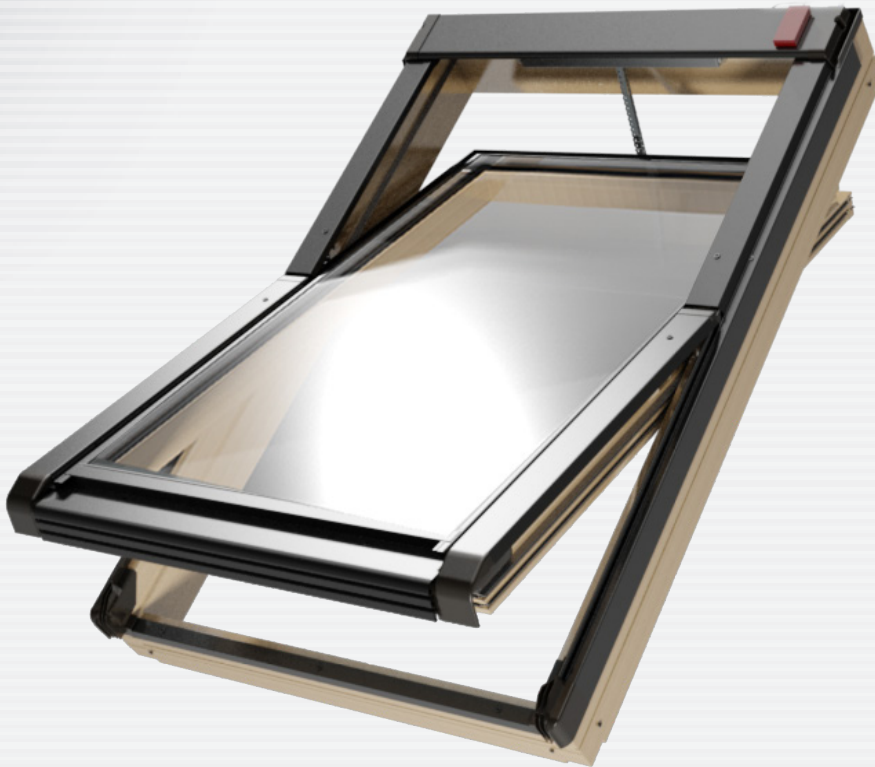
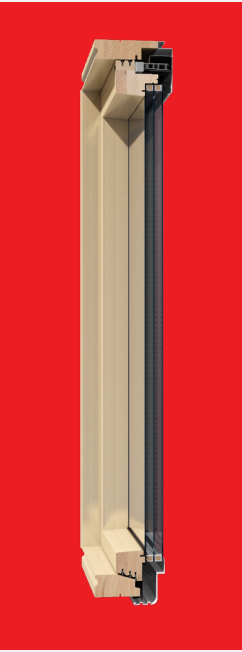
$U_w = 1,06 \text{ W/m}^2\text{K}^*$

GLAZING UNIT

$U_g = 0,7 \text{ W/m}^2\text{K}$

**10 year** **Guarantee** **\*\***  
for windows

**10 year** **Guarantee** **\*\***  
for glass



TRIPLE GLAZED UNIT  
GAS - ARGON  
2 x WARM SPACER  
2 x LOW EMISSION COAT  
TOUGHENED EXTERNAL PANE

4 GASKETS

ELECTRICAL ENGINE 230V  
WITH REMOTE AP4

AUTOMATIC  
RAIN SENSOR

IMPREGNATED PINE WOOD  
THREE COATS OF VARNISH

ROOF PITCH

NON - STANDARD SIZES



### WINDOW SIZES

glazing area [m <sup>2</sup> ]	0.45	0.56	0.70	0.81	0.71	0.89	1.04	0.91	1.12	0.88
size symbol	05	06	07	13	08	09	14	10	11	12
window size: width x height [cm]	78x98	78x118	78x140	78x160	94x118	94x140	94x160	114x118	114x140	134x98

\* Parameter  $U_w$  - thermal permeability coefficient.  
\*\* Details about the guarantee policy available at [www.okpol.com](http://www.okpol.com).